



MODERN - 1746 SQ.FT.



HERITAGE - 1758 SQ.FT.

[EmpireHomesWyndfield.com](http://EmpireHomesWyndfield.com)

# BELWOOD

3 Beds | 2.5 Baths

27'  
DETACHED HOMES



CRAFTSMAN - 1746 SQ.FT.

Empire  
HOMES

Wyndfield

# 27'

DETACHED HOMES

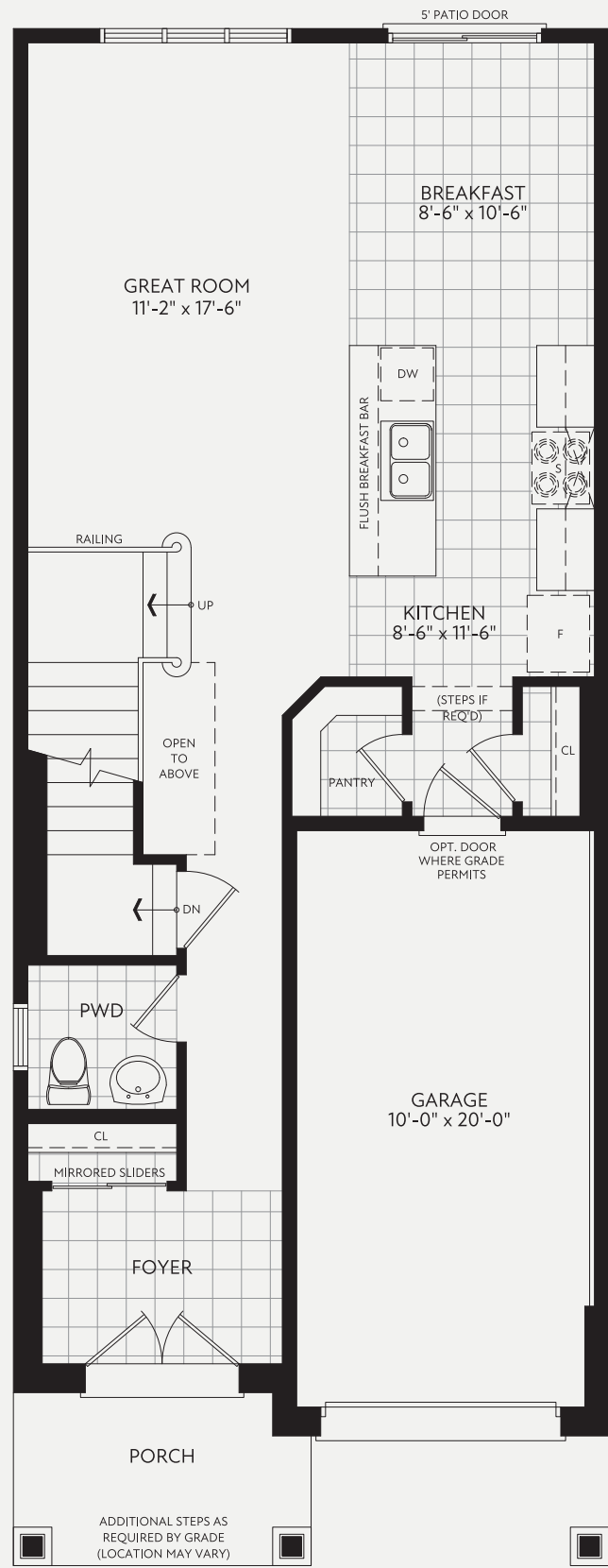
3 Beds | 2.5 Baths

## BELWOOD

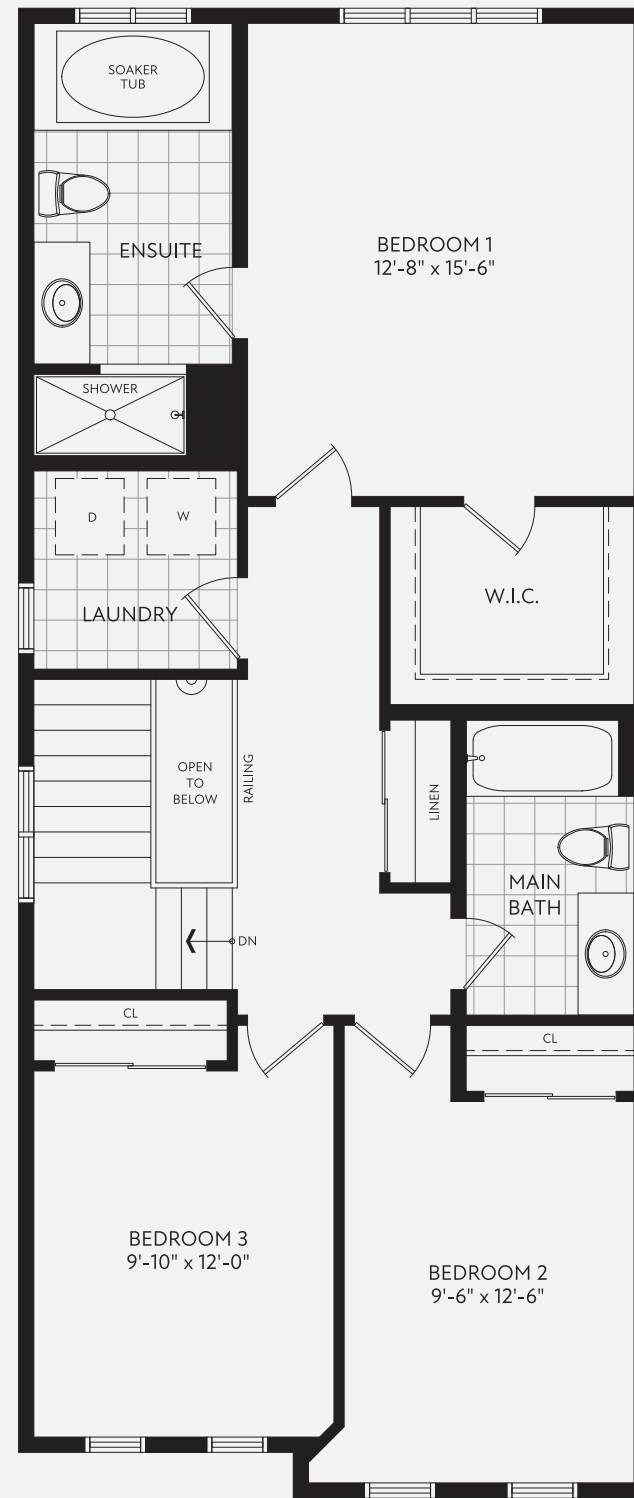
CRAFTSMAN - 1746 SQ.FT.

MODERN - 1746 SQ.FT.

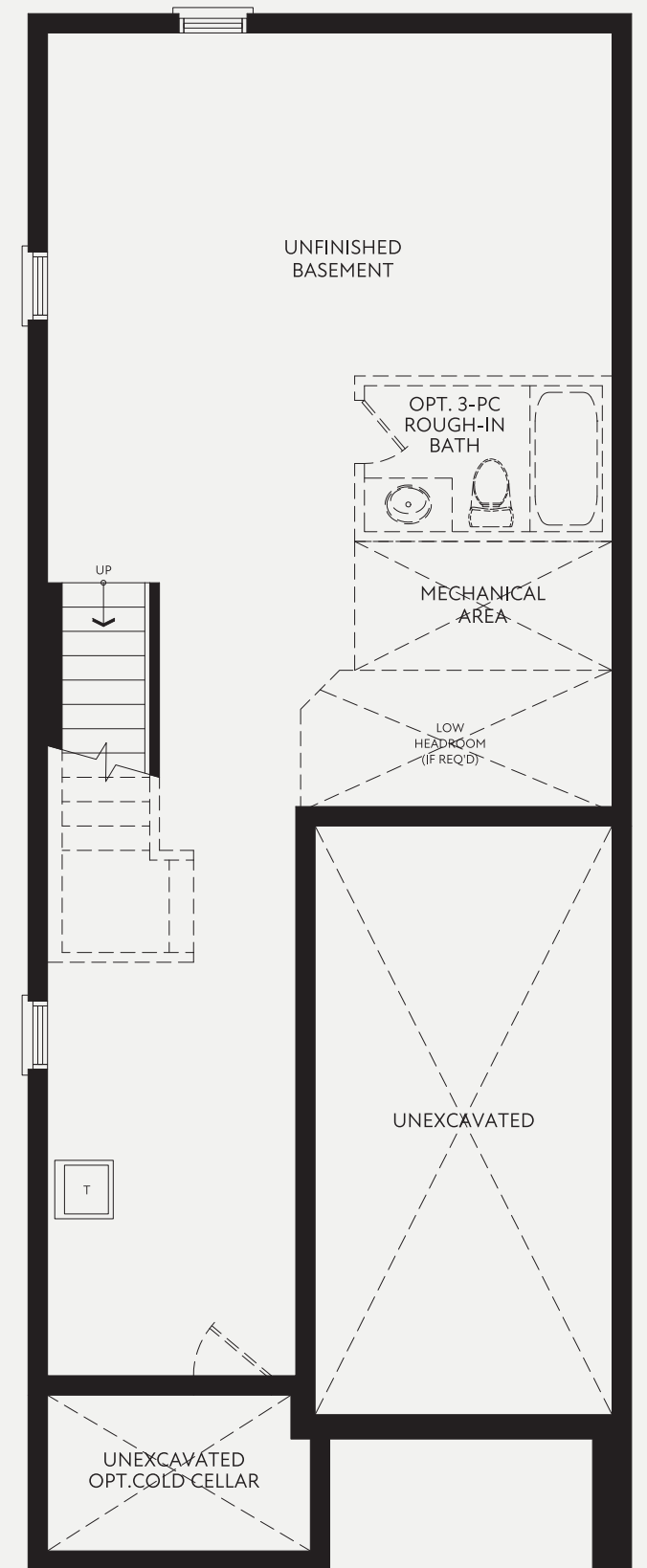
HERITAGE - 1758 SQ.FT.



GROUND FLOOR PLAN  
CRAFTSMAN



SECOND FLOOR PLAN  
CRAFTSMAN



BASEMENT PLAN  
CRAFTSMAN

All renderings and illustrations are artist's concept. Specifications, terms, prices and conditions are subject to change without notice. Actual usable floor space may vary from the stated floor area. These floorplans and room dimensions apply to craftsman of this model type and may vary according to style. Please see Sales Representative for details. Location of furnace, hot water tank and support posts and beams are determined by the HVAC designer and architect respectively. Number of exterior steps may vary depending on the lot and the grading of individual home sites. April 2026. E.&O.E. 27-10